

PHASE
CIRCUIT No.

CIRCUIT No.	PHASE
L1	R
L2	W
L3	B
L4	R
L5	W
L6	B
L7	R
L8	W
L9	B
EL1	R
EL2	W
EL3	B

DESIGNATION

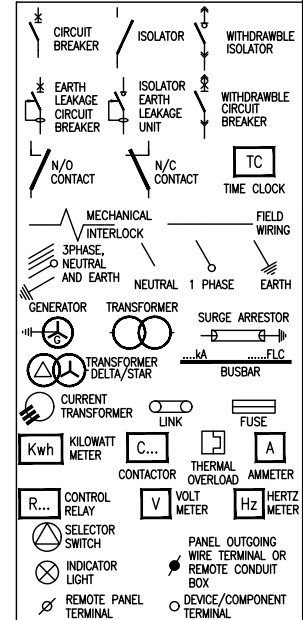
DESIGNATION	INCOMER	GENERAL LIGHTING	SPARE	SPARE	SPARE	EXTERNAL LIGHTING

WIRING


WIRING	3x2.5mm ² Cu PVC WIRE	3x2.5mm ² Cu PVC WIRE

CABLE No.
LOAD (AMPS)
No. OF POINTS

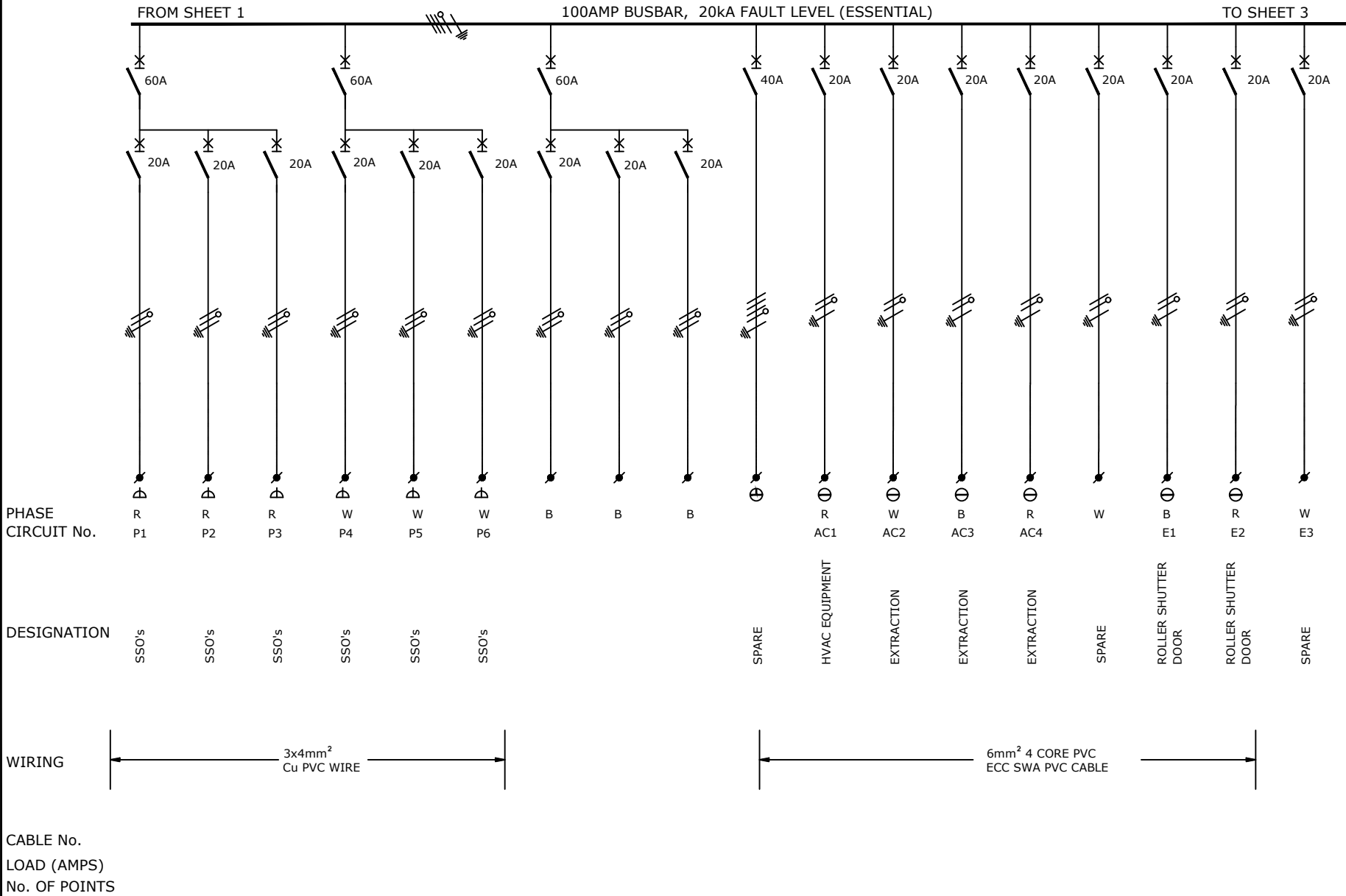
- NOTES**
- 1) DROPPERS/TAILS TO BE RATED FOR FULL IP.
 - 2) LET THROUGH.
 - 3) HARNESSING WIRING TO BE DERATED.
 - 4) TUFFNOL BRACES ARE NOT TO BE USED ABOVE 10KA.
 - 5) CUPPER BUSBARS TO BE CONTINUOUS RATED.
 - 6) ALL OUTGOING CIRCUIT BREAKERS TO BE FITTED WITH COPPER TAILS TO FACILITATE CABLE TERMINATIONS IN THE CABLE CHAMBER AND NOT ON THE CIRCUIT BREAKER.
 - 7) CUPPER TAILS FROM DROPPER BUSBAR AND OUTGOING COPPER TAILS TO BE ADEQUATELY BRACED FOR FAULT LEVEL AND SHROUDED WITH HEAT SHRINK.
 - 8) ALL CIRCUIT BREAKERS TO BE FITTED WITH TERMINAL SHIELD ON LIVE AND LOAD SIDES.
 - 9) ENCLOSURE TO BE IP54.
 - 10) PHASING RWB, TOP TO BOTTOM, LEFT TO RIGHT, BACK TO FRONT.
 - 11) INTERNAL TEMP TO BE LIMITED TO 5° ABOVE AMBIANT, MAX 40°C.
 - 12) ALL CIRCUITS TO BE LABELED.
 - 13) 25% SPARE SPACE. SPARE SPACES ARE TO BE FITTED WITH COPPER BUSBAR TAILS CONNECTED TO DROPPER BUSBARS TO ALLOW INSTALLATION OF CIRCUIT BREAKERS WITH A MINIMAL SHUTDOWN PERIOD.
- INCOMING CABLE -TOP
OUTGOING CIRCUITS -TOP
COLOUR -RED
MOUNTING -FLOOR STANDING
ACCESS -FRONT
PROTECTIVE DEVICES -SCHNEIDER




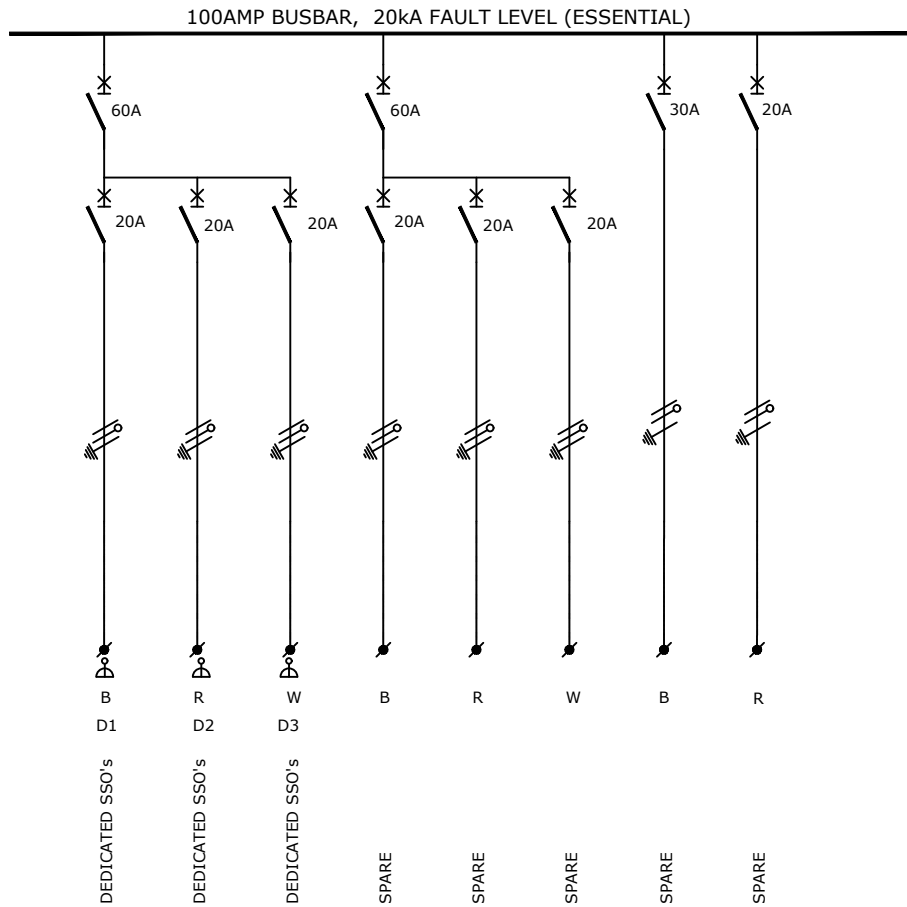
										NOT WITHSTANDING ANYTHING TO THE CONTRARY, ALL RIGHTS RESERVED. NO PART OF THIS DRAWING MAY BE REPRODUCED IN ANY MATERIAL FORM (INCLUDING PHOTOCOPIING OR STORING IN ANY MEDIUM OR BY ELECTRONIC MEANS WHETHER OR NOT TRANSIENTLY OR INCIDENTALLY TO SOME OTHER USE OF THIS DRAWING) AND ALSO, THIS DRAWING MAY NOT BE USED FOR ANY PURPOSE OR REASON OTHER THAN FOR WHICH IT WAS ORIGINALLY ISSUED, WITHOUT THE WRITTEN PERMISSION OF IBUYA CONSULTING ENGINEERS.										
					ENGINEER	DRAWN	DATE:	SCALE: n.t.s	CHKD.	TITLE Government Printing Works Refurbishment										
A	General Revision			VT	11/03/20	MK	M.Kambaran	VT	Nov'17											PAPER SIZE: A3
0	Original Issue			VT	22/02/18	AM	PROJECT No. 17052	DRAWING No. 402	SHEET: 1 of 3	REV. A	DRAWING TITLE: BASEMENT DB DB-B1E (ESSENTIAL) SINGLE LINE DIAGRAM									
REV	DESCRIPTION			BY	DATE	CHKD.	File Name : 17052_402 Lyr:													

	LDM <i>Solutions For The Built Environment</i>
---	--





										NOT WITHSTANDING ANYTHING TO THE CONTRARY, ALL RIGHTS RESERVED. NO PART OF THIS DRAWING MAY BE REPRODUCED IN ANY MATERIAL FORM (INCLUDING PHOTOCOPYING OR STORING IN ANY MEDIUM OR BY ELECTRONIC MEANS WHETHER OR NOT TRANSIENTLY OR INCIDENTALLY TO SOME OTHER USE OF THIS DRAWING) AND ALSO, THIS DRAWING MAY NOT BE USED FOR ANY PURPOSE OR REASON OTHER THAN FOR WHICH IT WAS ORIGINALLY ISSUED, WITHOUT THE WRITTEN PERMISSION OF IBUYA CONSULTING ENGINEERS.									
					ENGINEER	DRAWN	DATE:	SCALE:	CHKD.	TITLE Government Printing Works Refurbishment									
A	General Revision			VT	11/03/20	M.Kambaran	VT	Nov'17							n.t.s				
					PROJECT No.	DRAWING No.	SHEET:	PAPER SIZE:	REV.	DRAWING TITLE: BASEMENT DB DB-B1E (ESSENTIAL) SINGLE LINE DIAGRAM									
0	Original Issue			VT	22/02/18	AM	17052								402	2 of 3	A		
REV	DESCRIPTION			BY	DATE	CHKD.	File Name : 17052_402			Lyr:			<div>LDM <i>Solutions For The Built Environment</i></div>						



CABLE No.
LOAD (AMPS)
No. OF POINTS

NOT WITHSTANDING ANYTHING TO THE CONTRARY, ALL RIGHTS RESERVED. NO PART OF THIS DRAWING MAY BE REPRODUCED IN ANY MATERIAL FORM (INCLUDING PHOTOCOPYING OR STORING IN ANY MEDIUM OR BY ELECTRONIC MEANS WHETHER OR NOT TRANSIENTLY OR INCIDENTLY TO SOME OTHER USE OF THIS DRAWING) AND ALSO, THIS DRAWING MAY NOT BE USED FOR ANY PURPOSE OR REASON OTHER THAN FOR WHICH IT WAS ORIGINALLY ISSUED, WITHOUT THE WRITTEN PERMISSION OF IBUYA CONSULTING ENGINEERS.

REV	DESCRIPTION	BY	DATE	CHKD.	FILE NAME	LYR
A	General Revision	VT	11/03/20	MK	17052_402	
0	Original Issue	VT	22/02/18	AM		

ENGINEER	DRAWN	DATE	SCALE	CHKD.
M.Kambaran	VT	Nov'17	n.t.s	
PROJECT No.	DRAWING No.	SHEET	REV.	
17052	402	3 of 3	A	

TITLE
Government Printing Works Refurbishment
DRAWING TITLE:
BASEMENT DB DB-B1E (ESSENTIAL) SINGLE LINE DIAGRAM

